

YO

Moment-Compensated Single Point

The Model YO Series load cells feature Triple Beam Technology, field-proven as the best solution for High Moment Weighing and Overload Protection.



LOAD CELL



applications

Hopper & Net Weighing

Bio-Medical Weighing

Check Weighing & Filling Machines

Platform and Belt Conveyor Scales

High Moment/Off-Center Loading

OEM and VAR Solutions

features

6-60 kg Capacities

Welded, Hermetically Sealed

Stainless Steel Construction

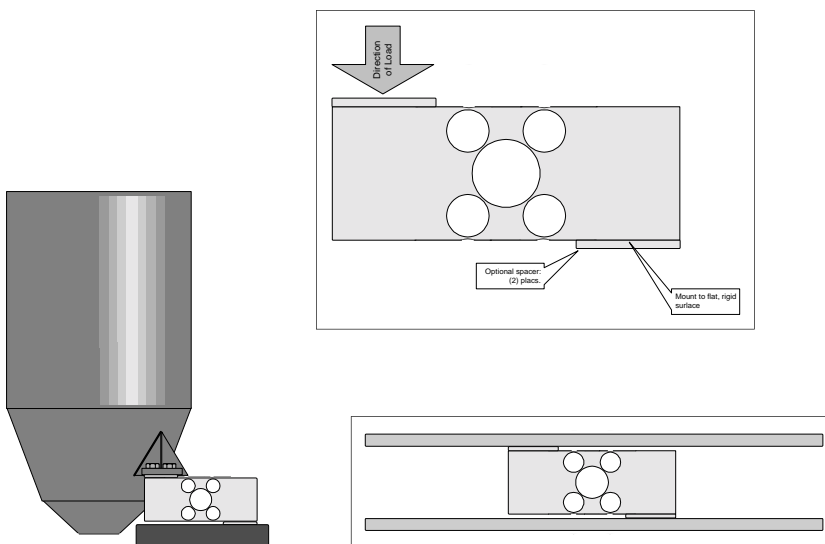
IP66-68 Environmental Sealing

Low Extraneous Load Sensitivity

Up to 0.05% Accuracy Class

Metric and SAE Versions

Two Year Warranty



100%
CUSTOMER
SATISFACTION
GUARANTEED

SENTRAN, LLC • California Commerce Center • 4355 Lowell Street • Ontario, CA 91761-2225

Toll Free: (888) 545-8988 • Phone: (909) 605-1544 • Fax: (909) 605-6305 • mail@sentranllc.com • www.sentranllc.com

YO

specifications



performance

Rated capacities ⁽¹⁾ (lbs.)	
Rated capacities ⁽¹⁾ (kg)	6, 12, 30, 60
Rated output (FSO)	2 mV/V ±10%
Combined error	≤ 0.03
Non-linearity	≤ 0.03
Hysteresis	≤ 0.02
Non-repeatability	≤ 0.01
Creep (30 minutes)	≤ 0.03 % of load
Zero balance	≤ 1% FSO
Zero Return (30 minutes)	Better than 0.03 % FSO
Eccentric Load Sensitivity*	≤ 0.3 % FSO

* Based on 50% Rated Load applied at a 6" radius.

electrical

Input impedance	400 ohms (nominal)
Output impedance	400 ohms (nominal)
Insulation resistance	>1000 Megohms @ 50VDC
Excitation Voltage	10 VAC/DC Typical; (15 V maximum)
Cable Color code:	+ Excitation (Green) + Sense (Yellow) - Excitation (Black) - Sense (Blue) + Output (White) - Output (Red) Shield (Bare)
Cable Length	7 meters

mechanical

Material:	Stainless steel
Finish:	Electro-polished
Safe overload	Compression: 150% FSO Tension: N/A Side load: 100% FSO
Ultimate overload	Compression: 300% FSO Tension: N/A Side load: 100% FSO
Deflection:	15 to 24 mm (capacity dependent)
Weight	<5lbs.

environmental



Temperature, operating	-40 to +80°C
Temperature, compensated	-10 to +40°C
Temperature effects:	Zero < 0.0015% FSO/°F < 0.0027% FSO/°C Output < 0.0010% of Rdg./°F < 0.0018% Rdg./°C
Sealing	IP66/68; Welded

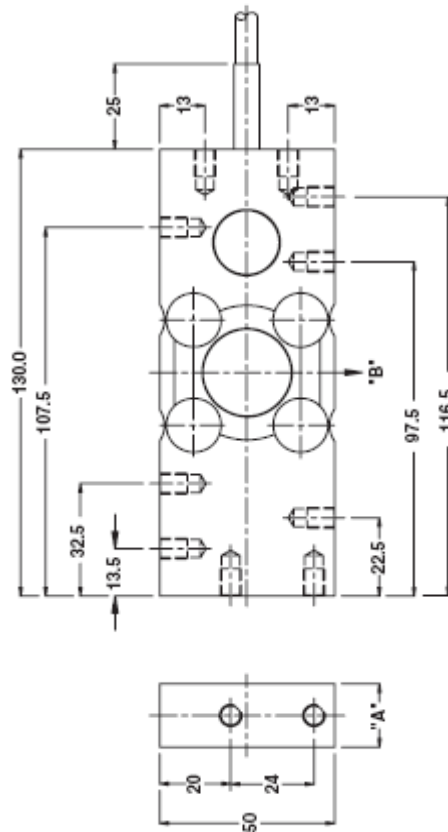
options

Custom cable lengths and styles, i.e. Teflon; OEM variations, including non-standard capacities and configurations.

dimensions

Cable specifications:
Cable length: 7m
Excitation + Green
Excitation - Black
Output + White
Output - Red
Sense + Yellow
Sense - Blue
Shield Transparent
Cable screen is not connected to load cell body.

Capacity (kg)	6, 12, 30	60
A	18.5	23.5
B	Central load axis	
Max. recommended platform size 350mm		
All threads M6x1 (8 Deep)		



application information

The YO Series load cells are cantilever beams requiring appropriate mounting bolts and bolt torques for proper operation. This product is to be used in accordance with design limits for safety and performance reasons. Consult SENTRAN's Limited Warranty Statement for complete details, which will cheerfully be provided on request.